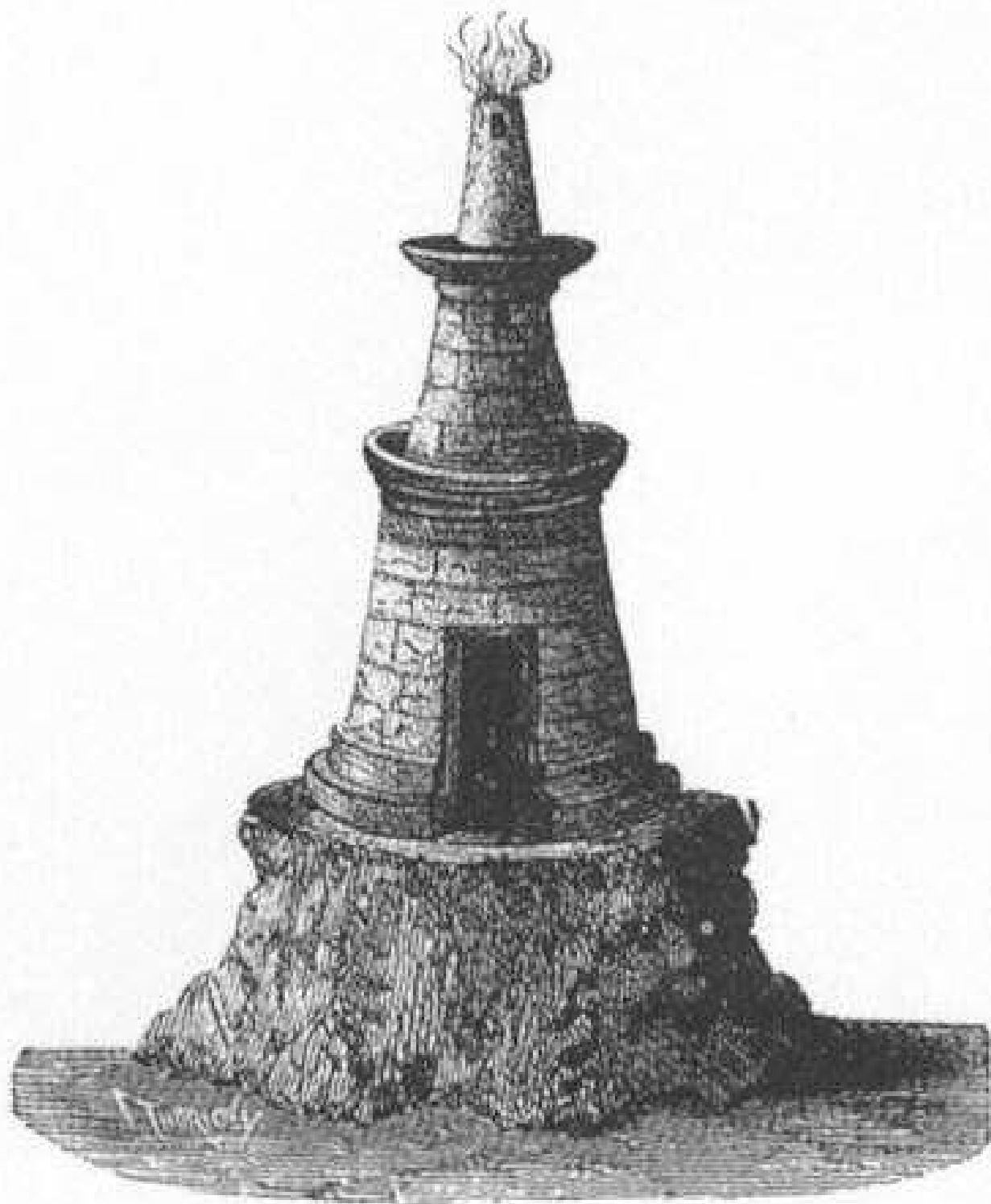


# VITAR- STRANDMENNING

MAGNUS SKULASON ARKITEKT  
FORSTÖÐUMAÐUR HÚSAFRIDUNARNEFNDAR RÍKISINS



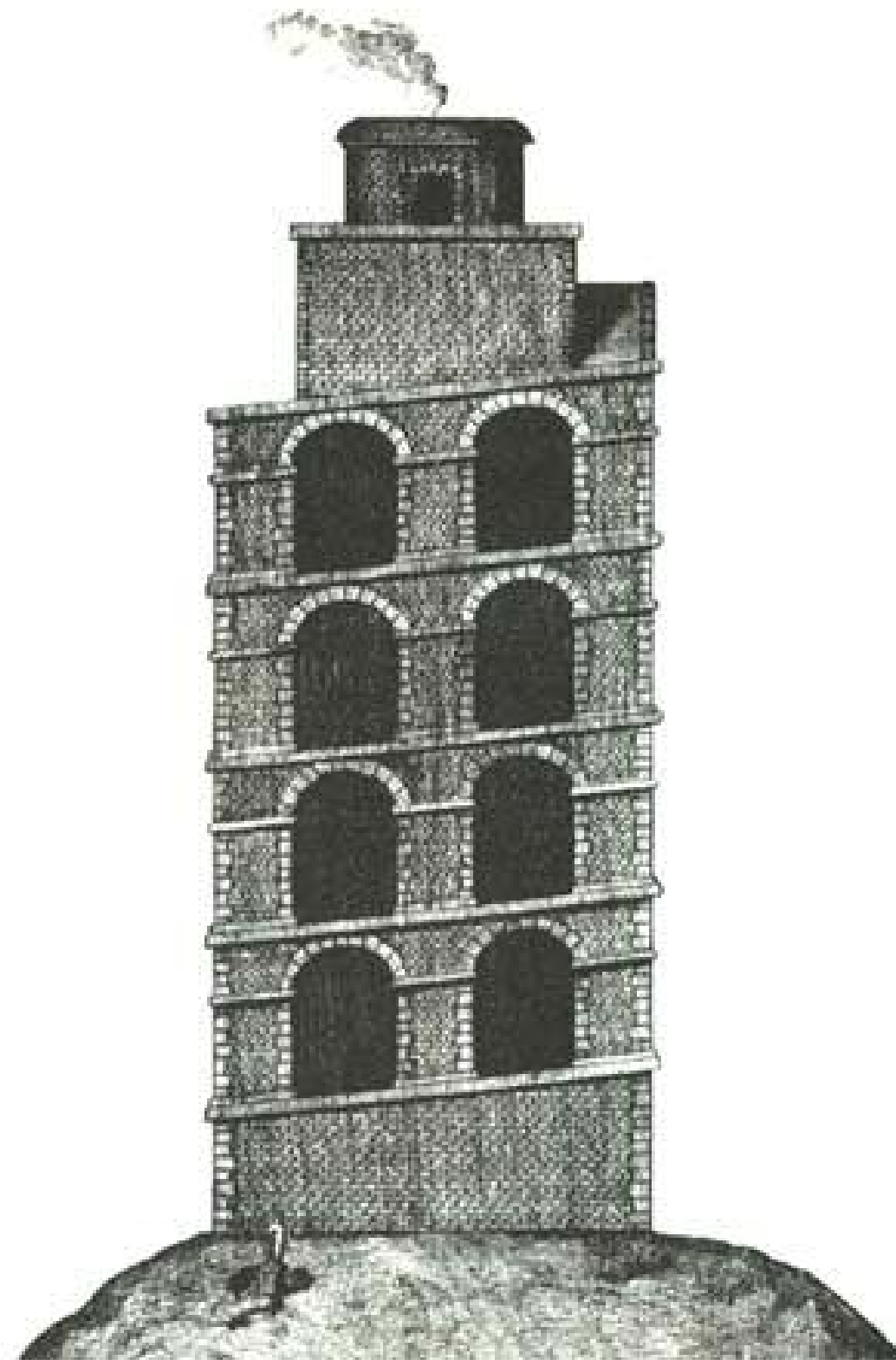




DOVER VITI 50 E.KR.



TORRE DE HERCULES 2.ÖLD E. KR.



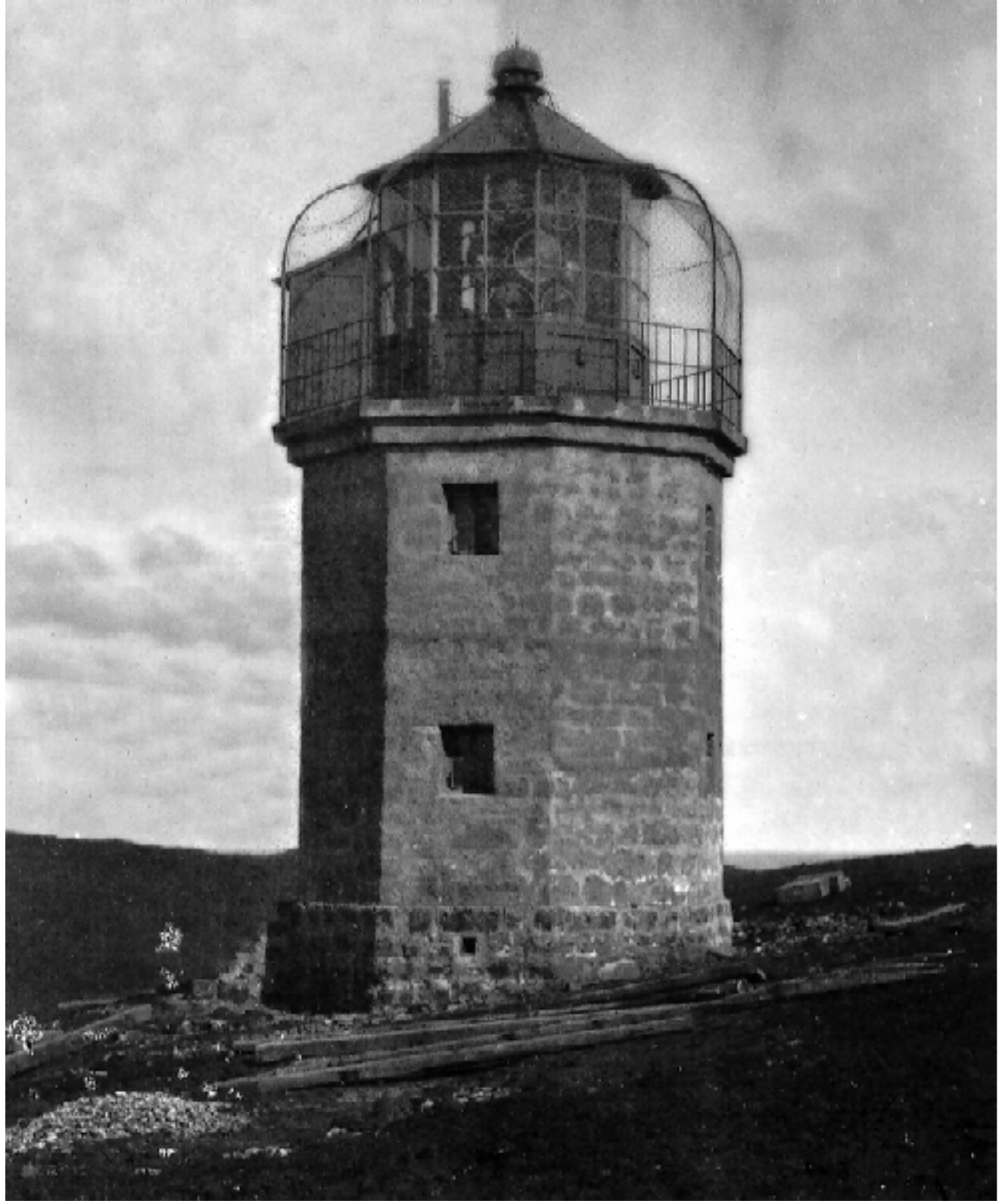




B. S. ...  
M.



Reykjanesviti 1878.

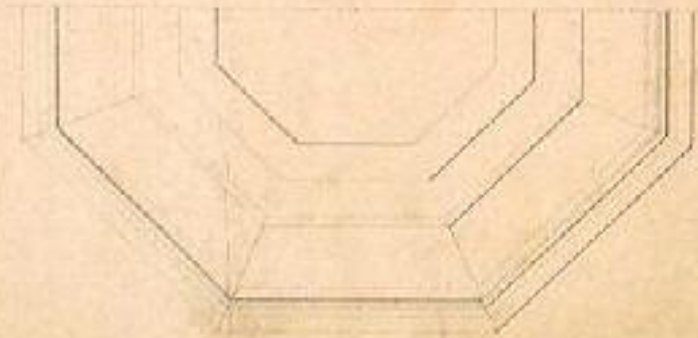
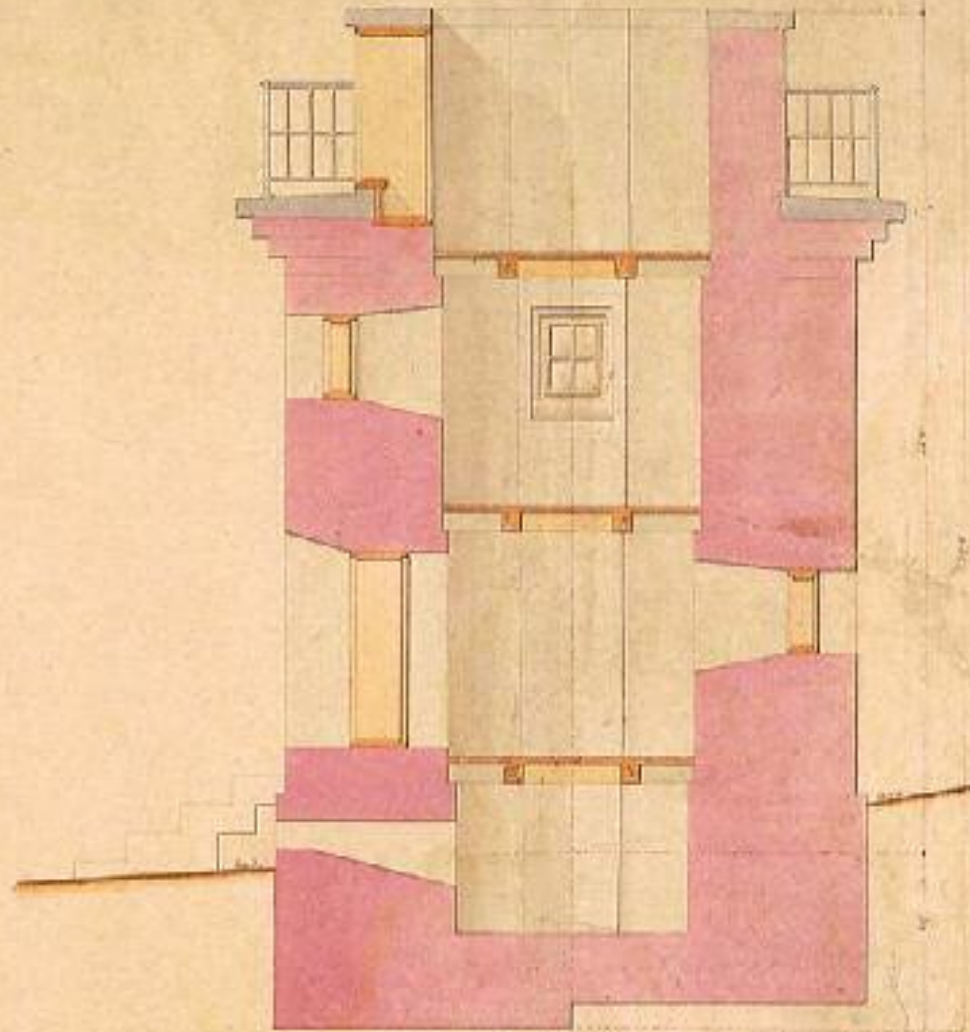
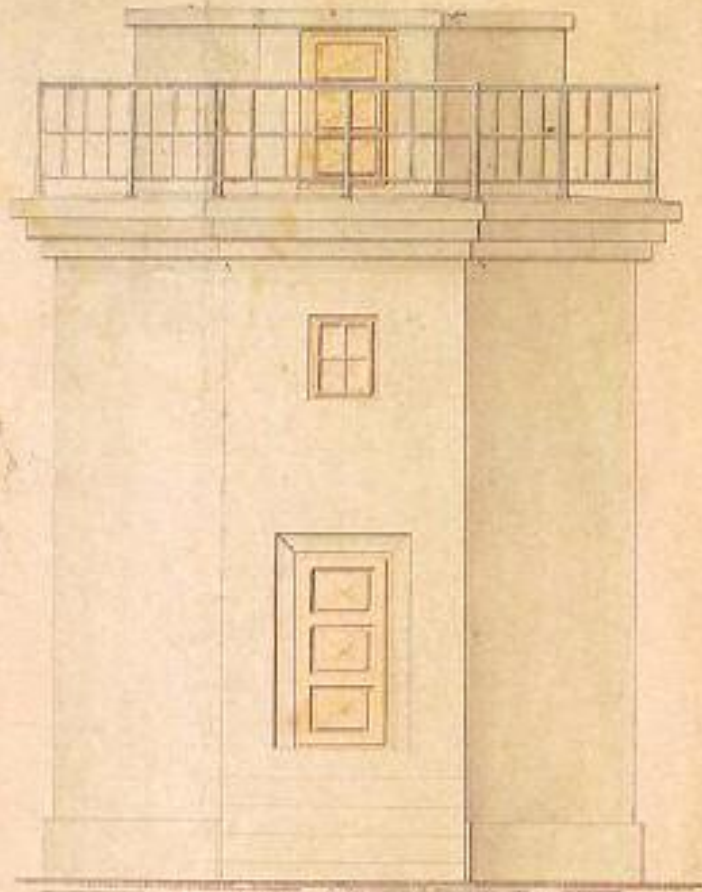


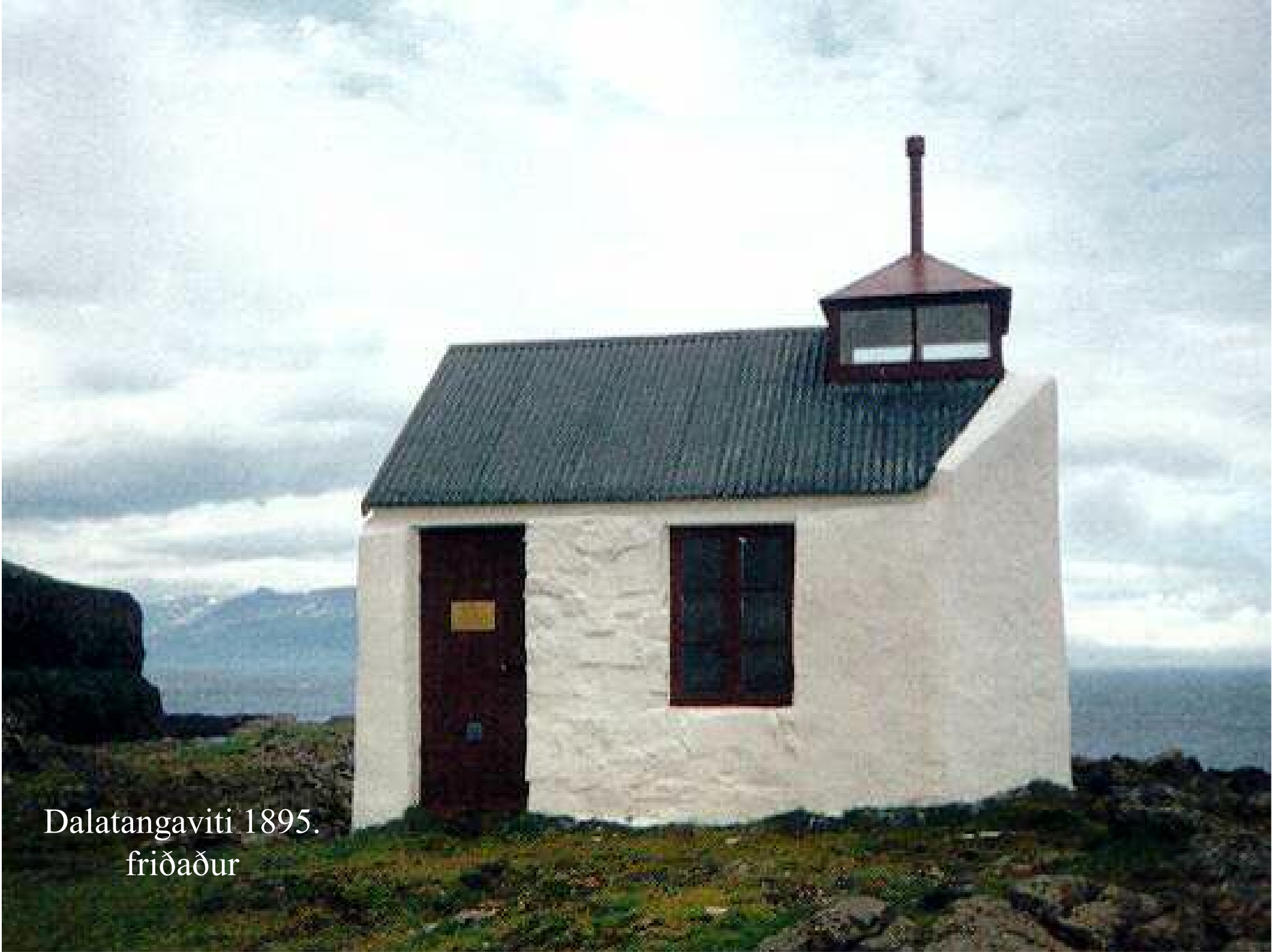
FORSLAG til et FYRTAARN

af  
Reykjavik.

Stations.

Duergaard.





Dalatangaviti 1895.  
friðaður



Reykjavíkurhöfn 1890.

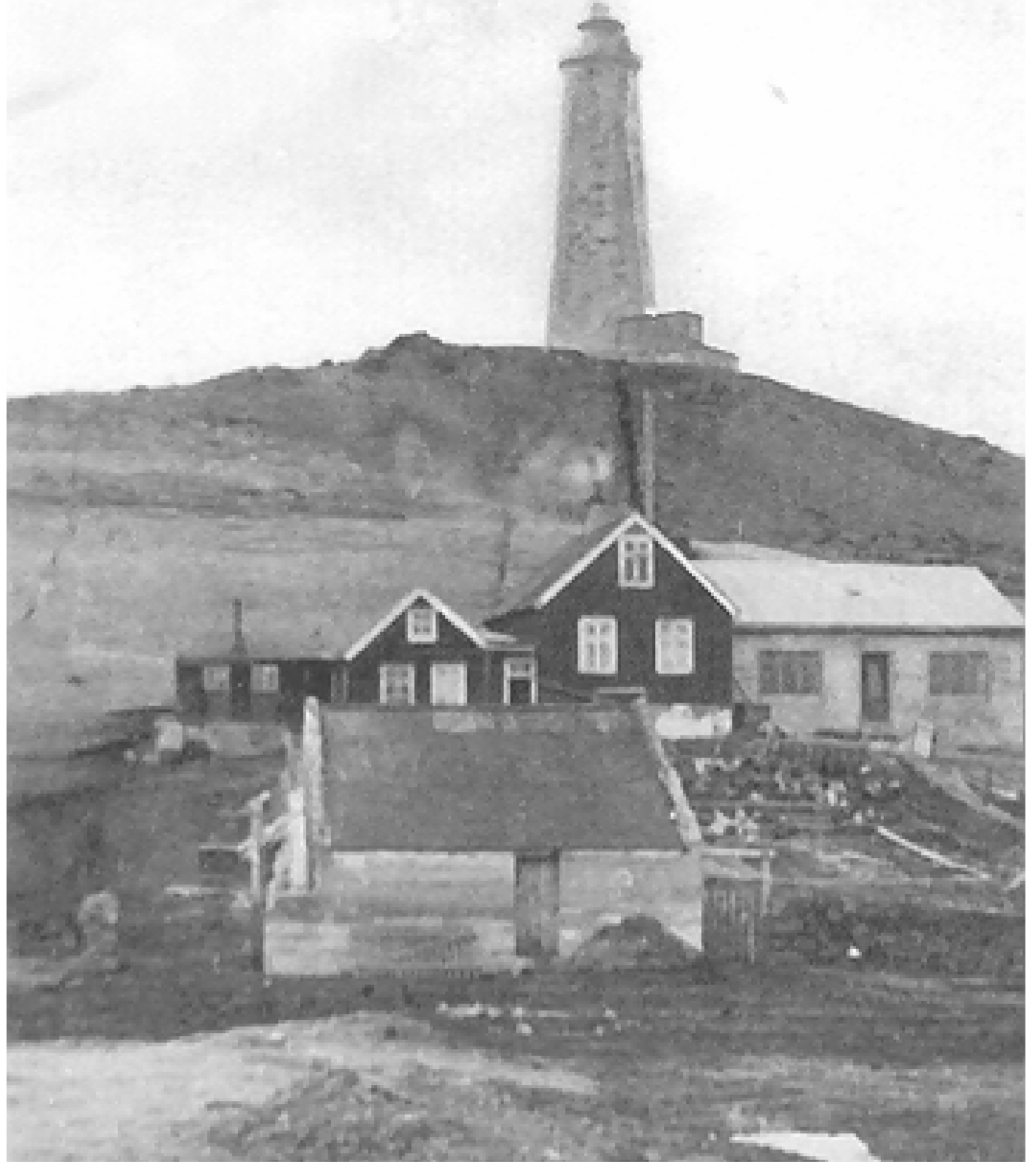


Reykjavík 1895.



Reykjavíkurhöfn 1900.

Reykjanesviti 1907-08.



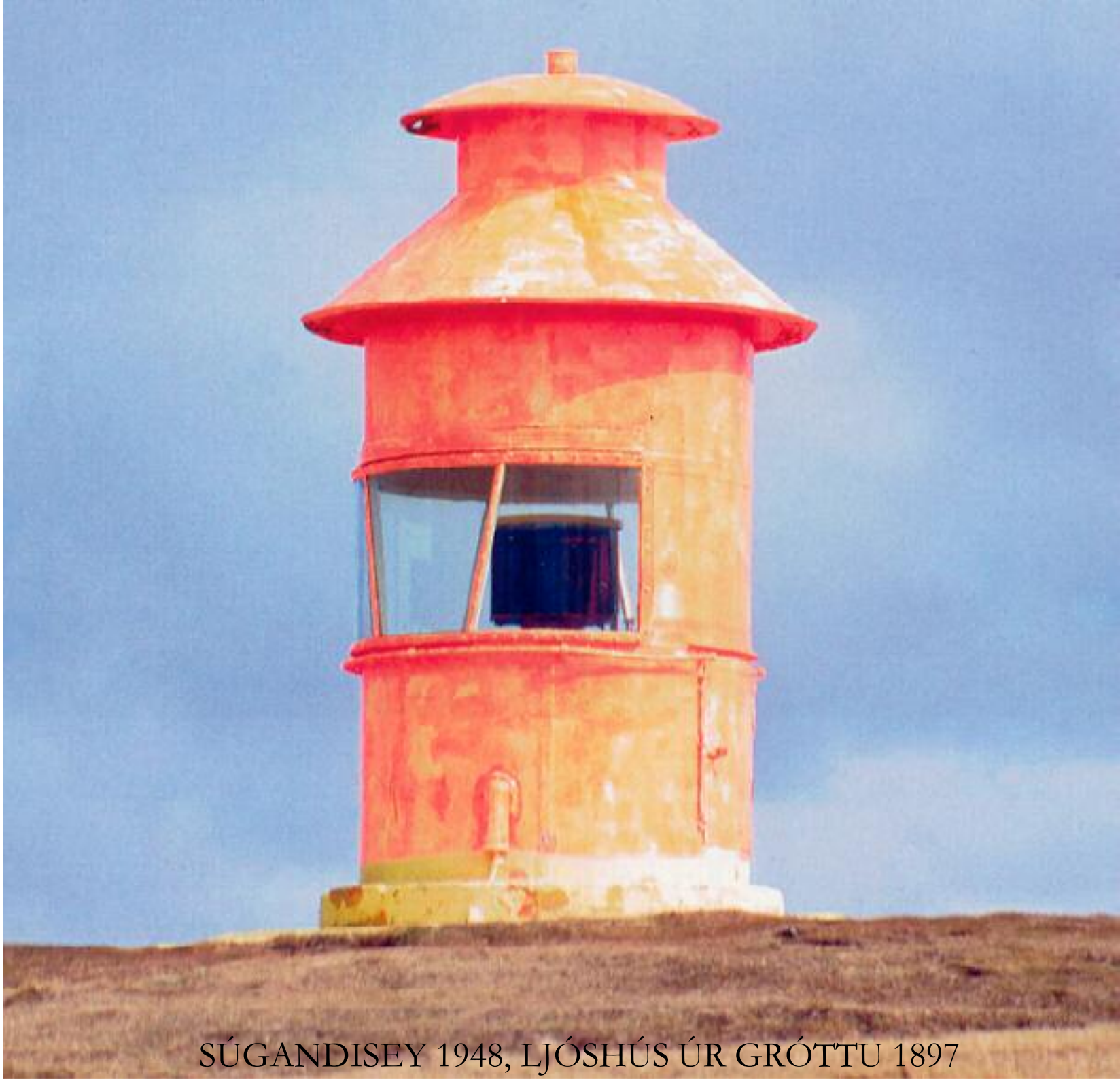


REYKJANESVITI 1907-1908 FRÍÐAÐUR





GARÐSKAGAVITI ELDRI 1897-1944 FRÍÐAÐUR



SÚGANDISEY 1948, LJÓSHÚS ÚR GRÓTTU 1897



STYKKISHÓLMUR



Stórhöfðaviti 1906

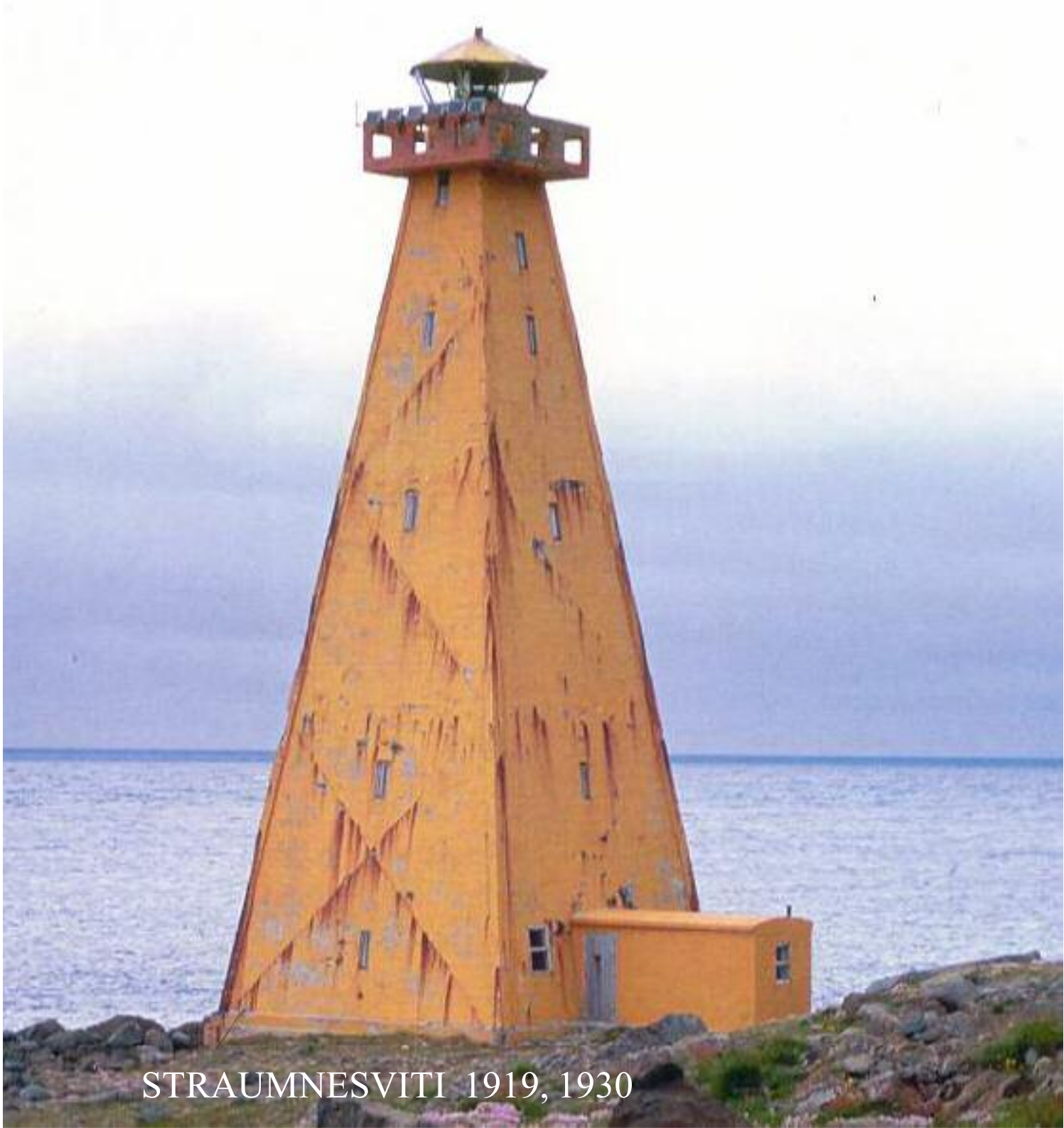




Stólpaviti 1909.



Rifstangaviti 1911 - Skaftárósviti 1953.



STRAUMNESVITI 1919, 1930

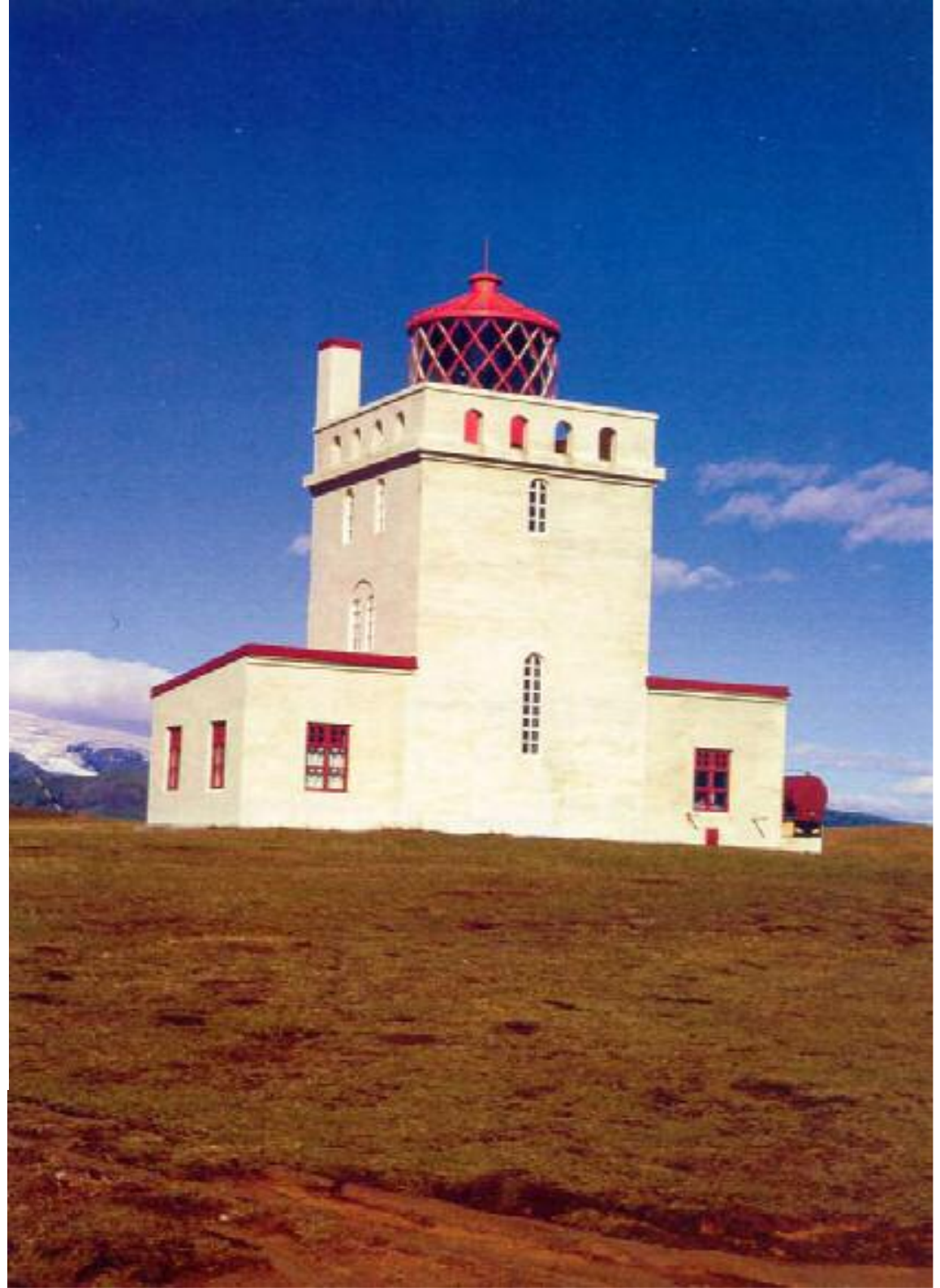
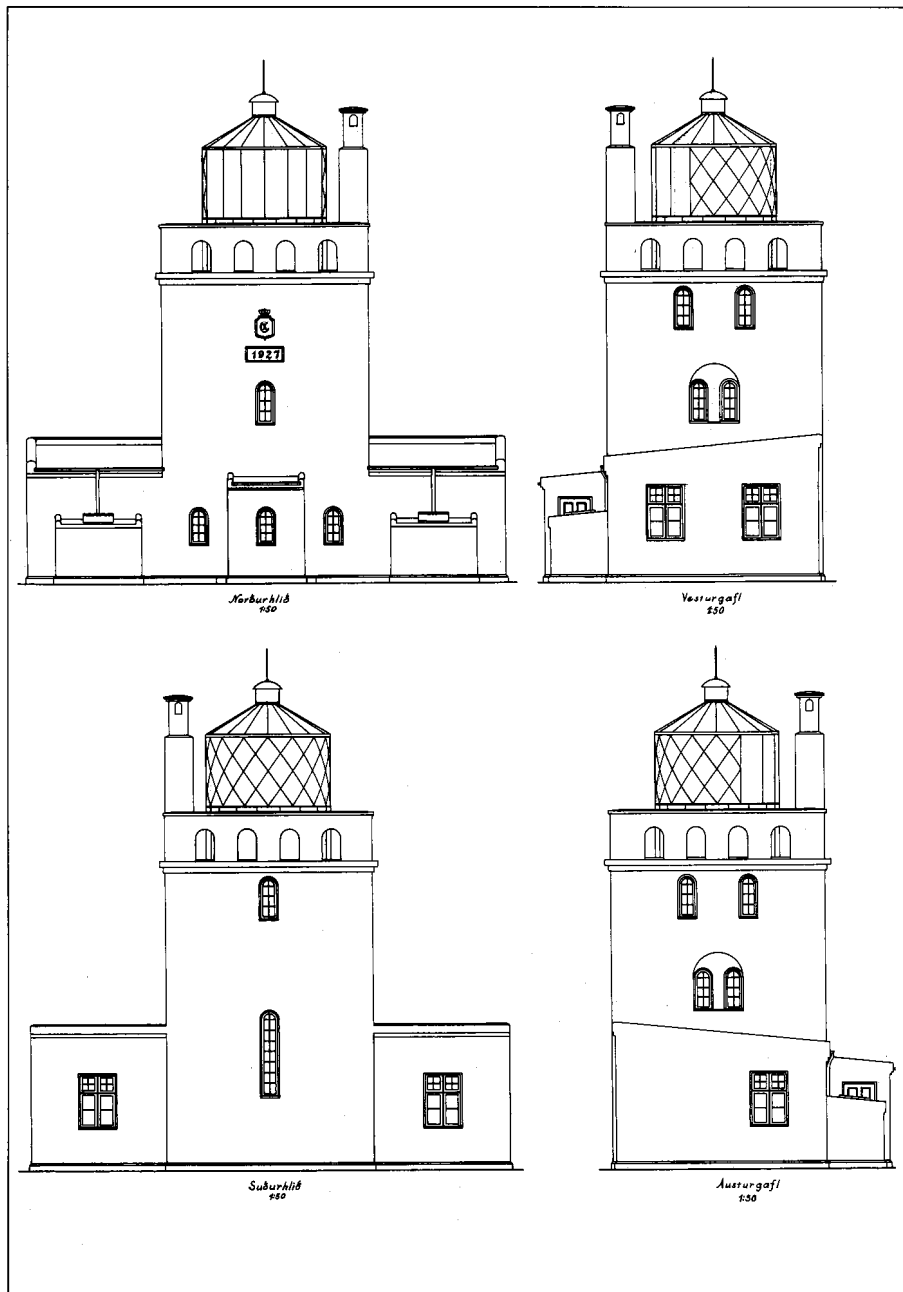


ARNARNESVITI 1921, FRÍÐAÐUR

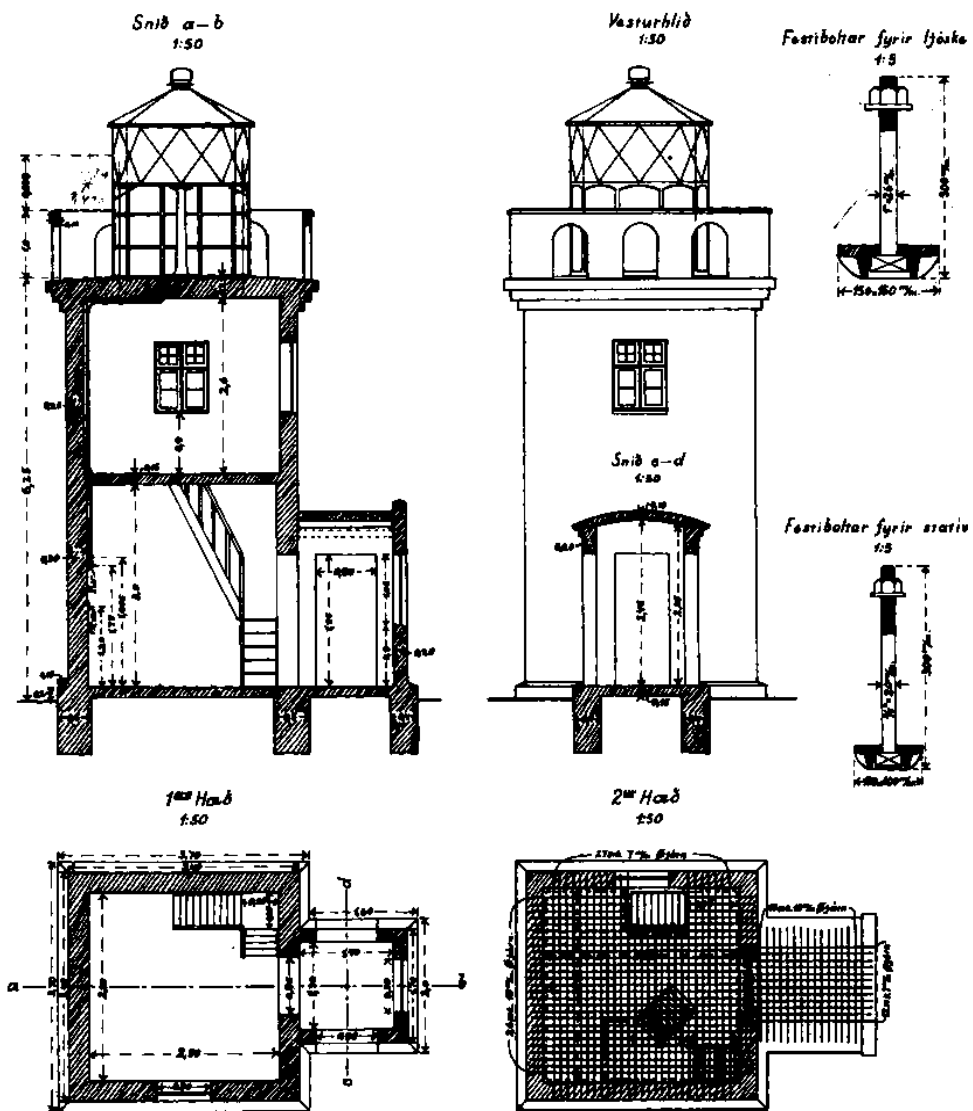


Hríseyjarviti 1920.  
friðaður





Dyrhólaeyjarviti 1927.  
friðaður



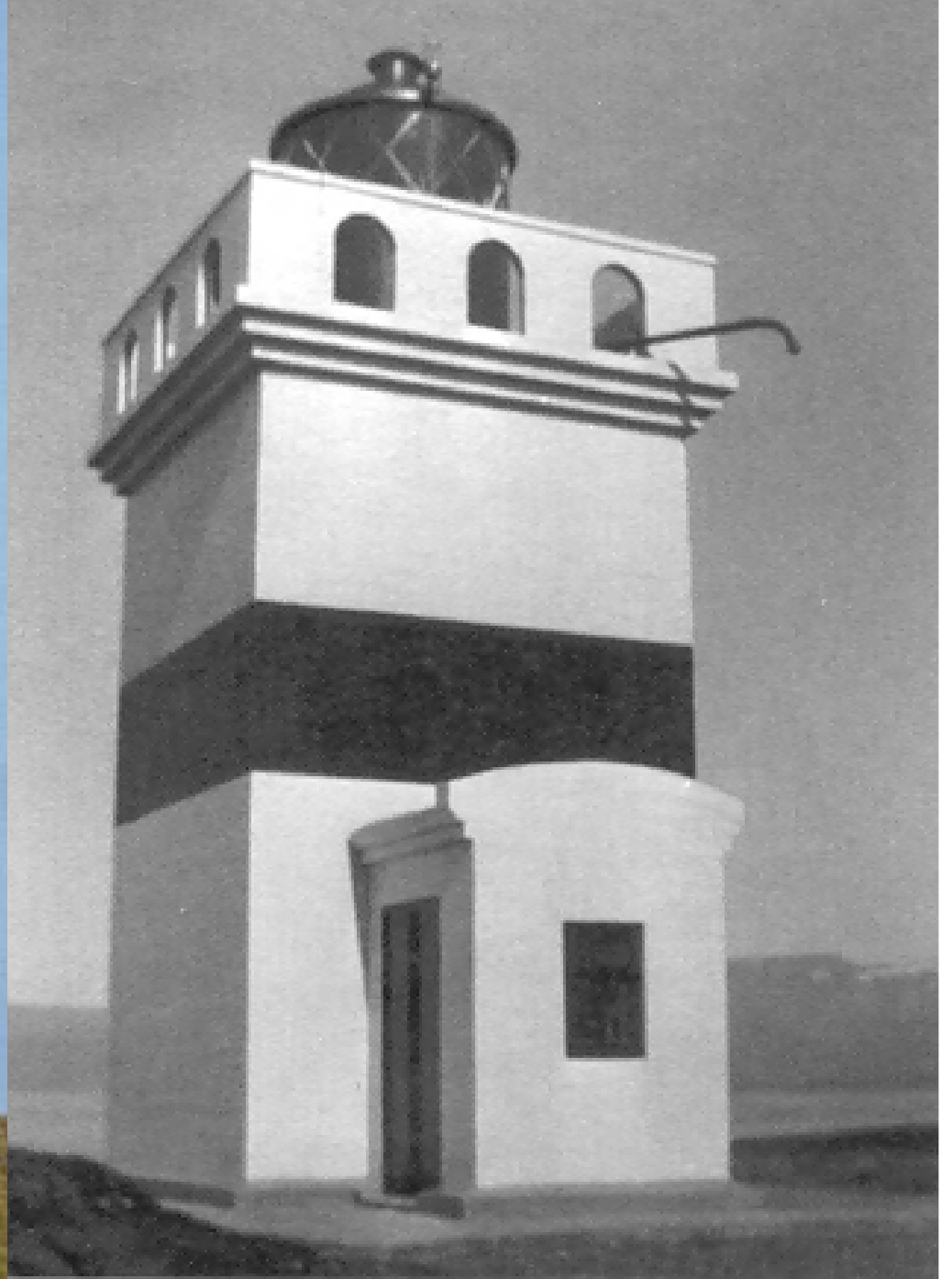
Raufarhafnarviti 1931.



Sauðanesvíti 1933-34.







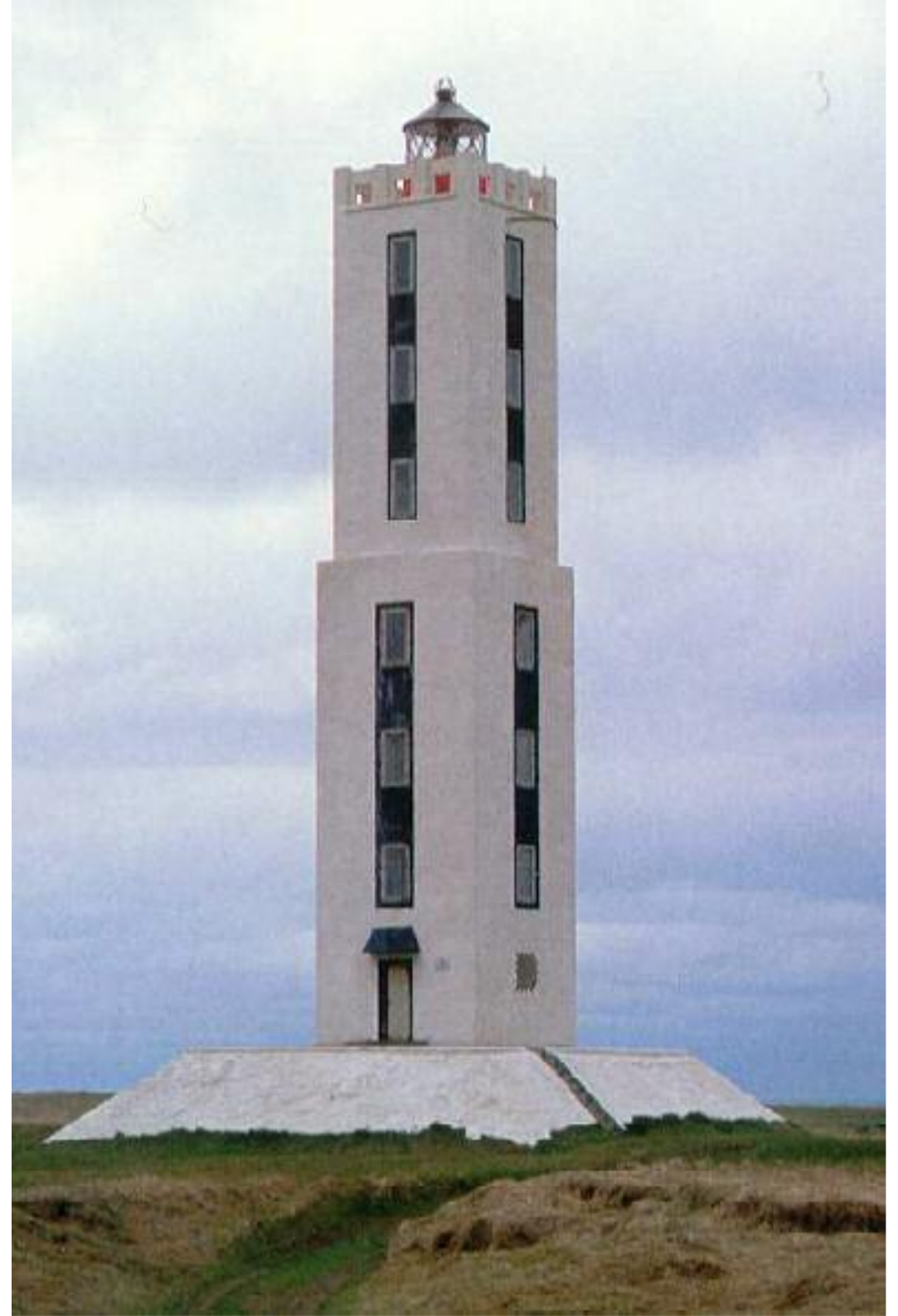
HEGRANESVITI 1936



HAFNARNESVITI 1938



EFTIR 1938-1954



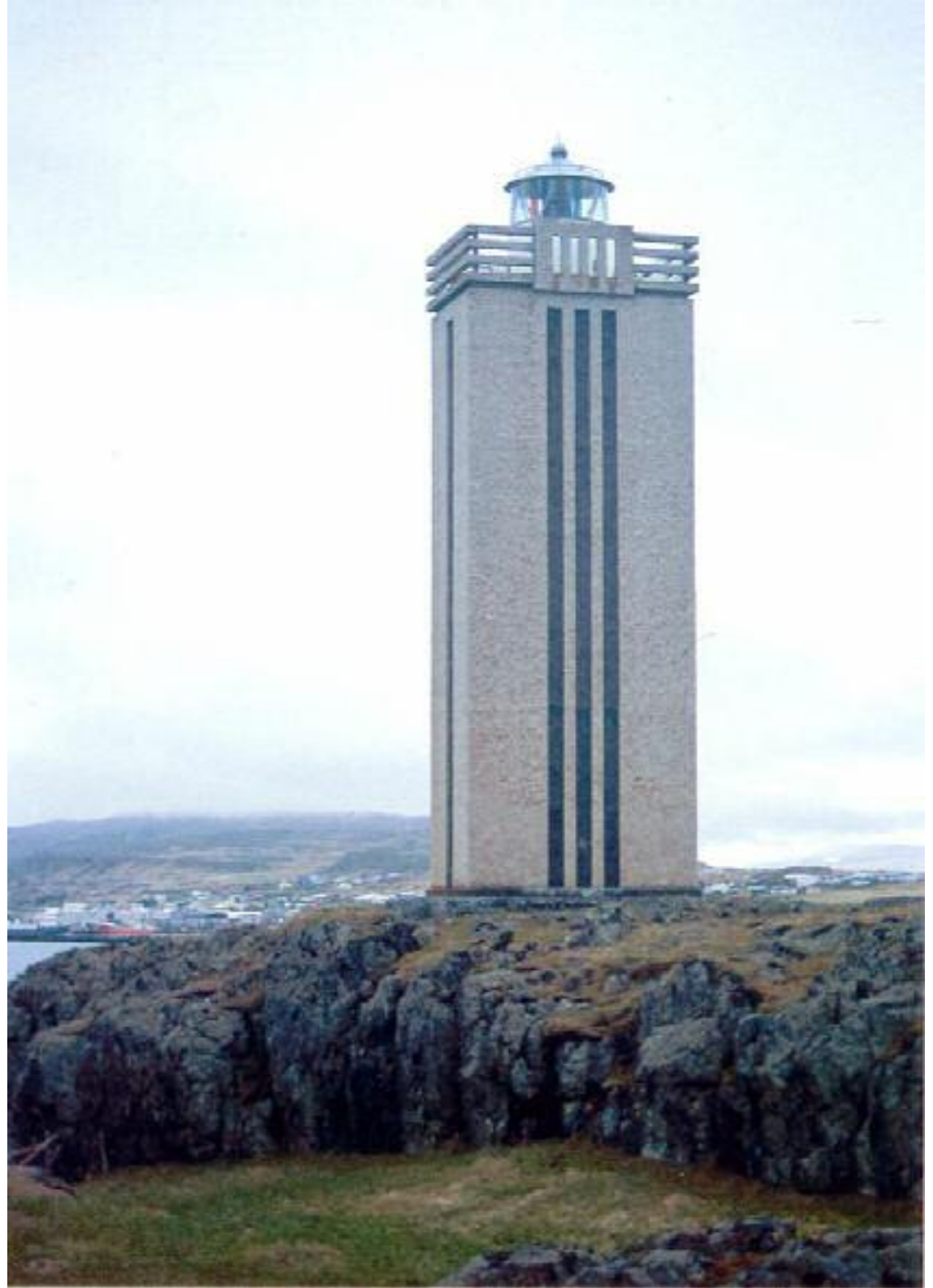
KNARRARÓS 1938-1939





Laugarneskirkja 1940-49.

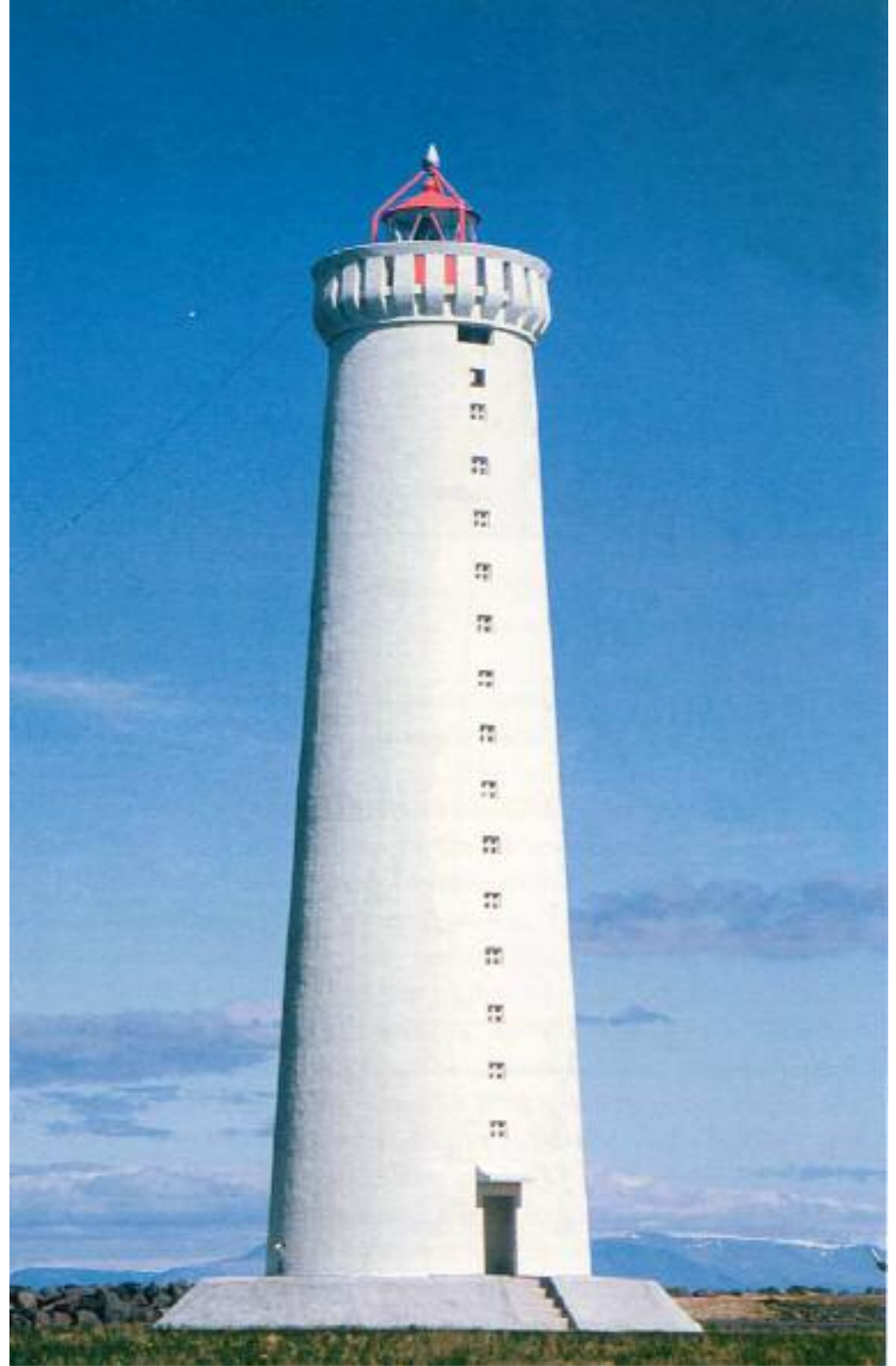
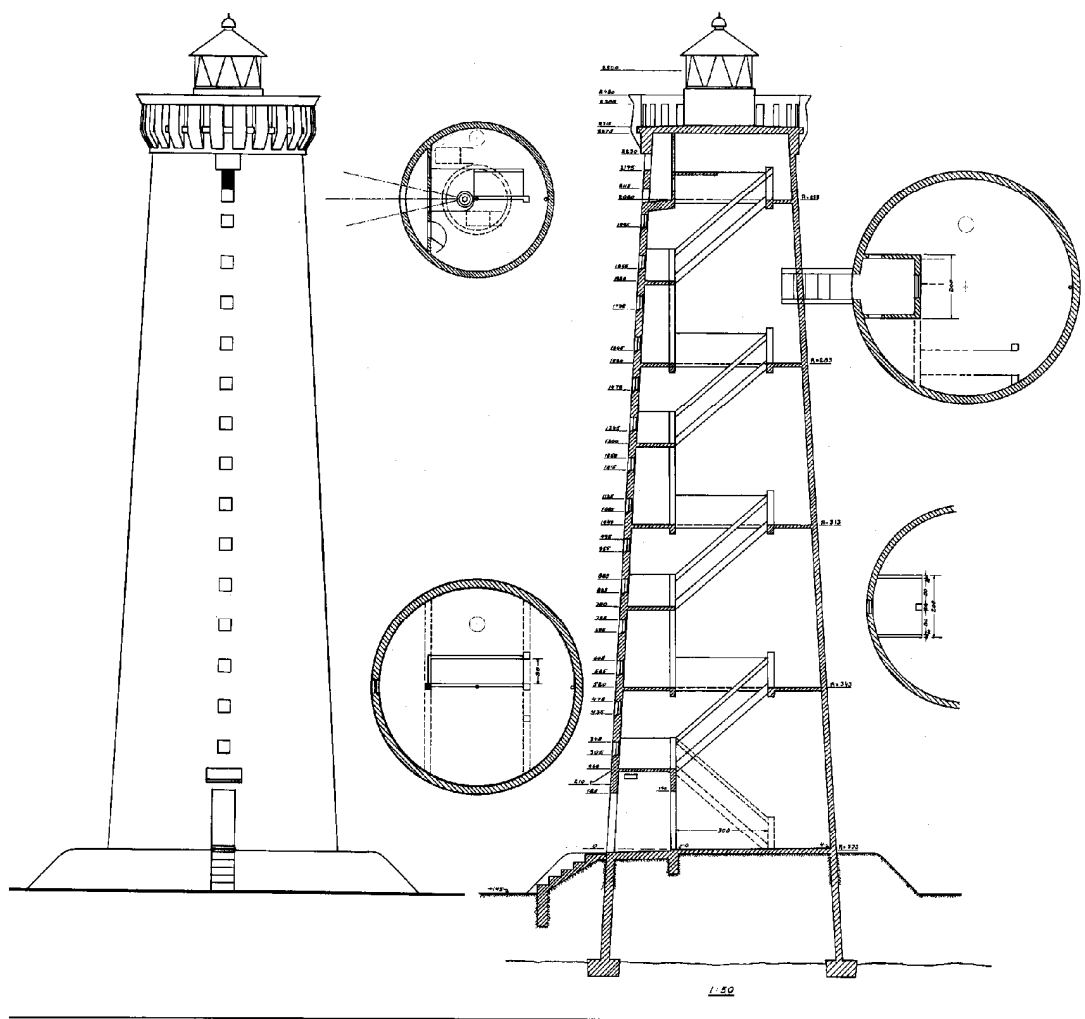
Kolbeinstangaviti 1942.











Garðskagaviti 1944.







Bjarnarey 1944 (1906)



MALARRIFSVITI 1946

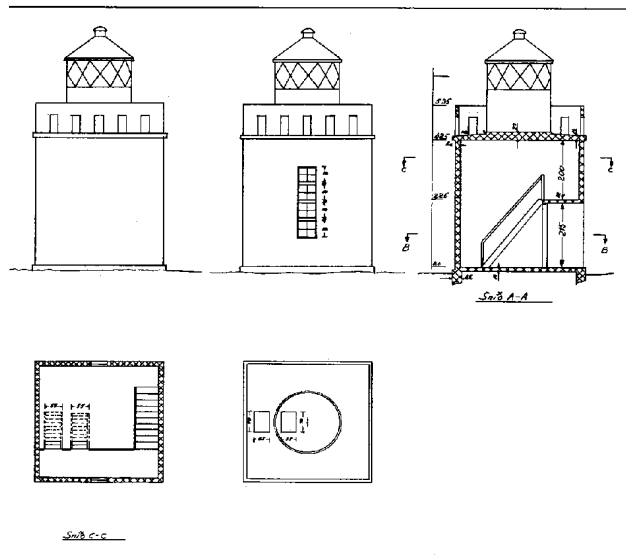
Malarrifsviti 1946, friðaður





Bjargtangaviti 1948. Friðaður.

Eftir 1954



Rauðanúpur 1958.







Hermóður 1924-1947.



Hermóður 1947-1959.

## Skip Vitastofnunar.



Árvakur 1962-1990.



ÓΤΤΑ 1947



# Vitar á Íslandi

LEIÐARLJÓS Á LANDSINS STRÖNDUM 1878 – 2002



GUÐMUNDUR BERNÓDUSSON  
GUÐMUNDUR L. HAFSTEINSSON  
KRISTJÁN SVEINSSON

  
SIGLINGASTOFNUN